

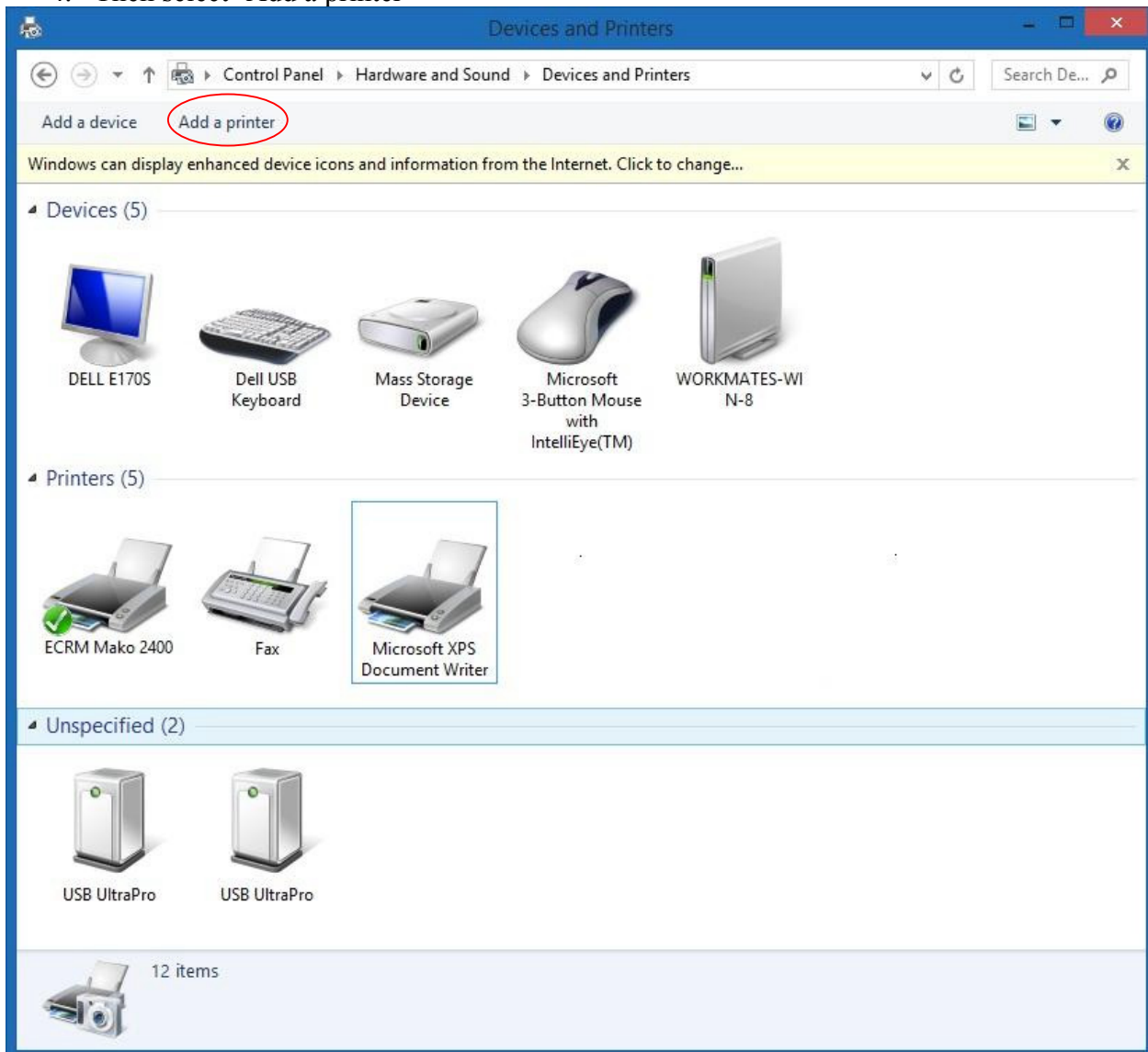
## Adding a Printer (PPD) in Windows 7 & Windows 8

A quick walk-through.

1. Setup a SpoolFolder on the RIP via the Input Controller and Share the folder.
  - a. Be sure 'everyone' has read & write permissions for the shared folder.
2. Create a shortcut to the shared folder on the local workstation desktop.
3. Open the Devices and Printers Window...
  - a. Select TaskBar>Start>Devices and Printers (Windows 7)
  - b. Or, Start the Control Panel (Windows 7 & 8)
    1. Select Hardware & Sound, View Devices and Printers

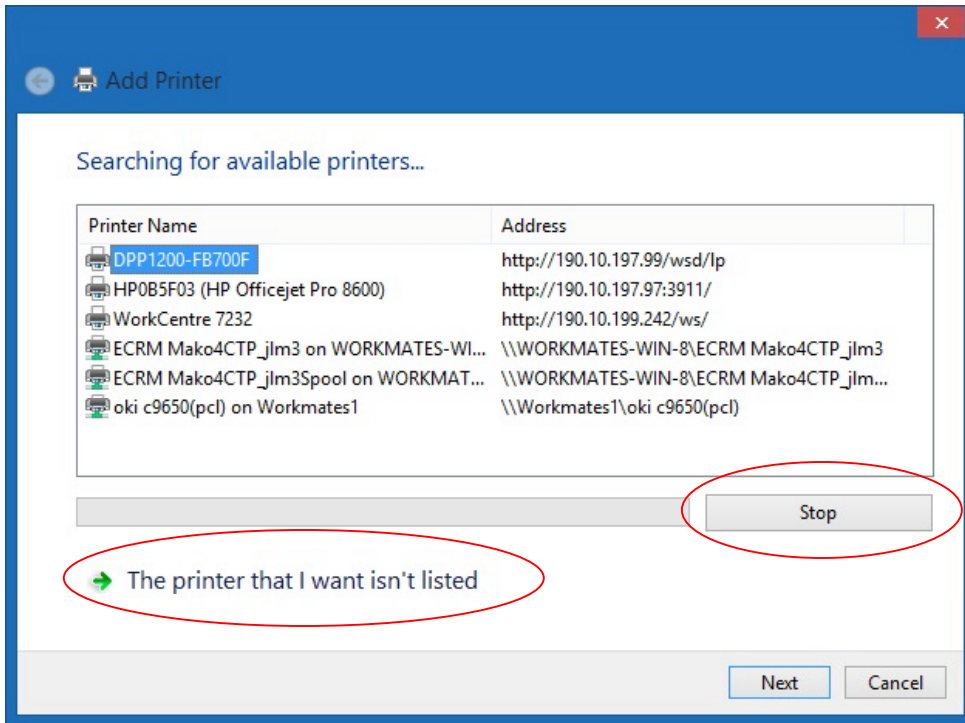


4. Then select 'Add a printer'

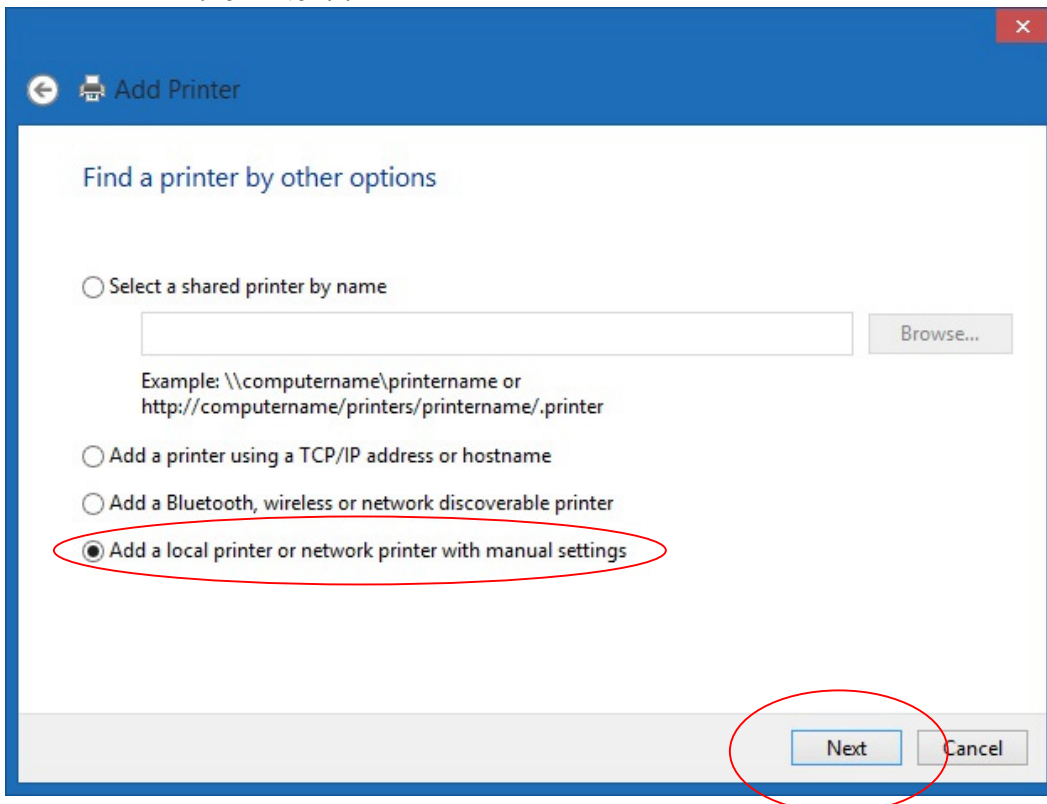


## Adding a Printer (PPD) in Windows 7 & Windows 8, A quick walk through

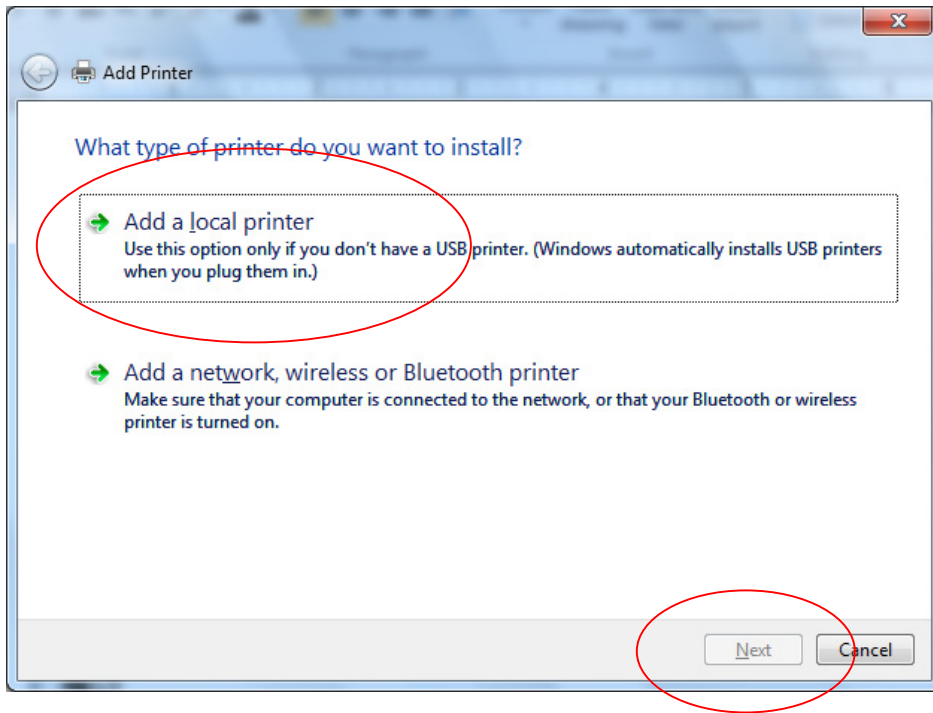
5. If your system starts scanning for Printers, click 'Stop', then select 'The Printer I want isn't listed'.



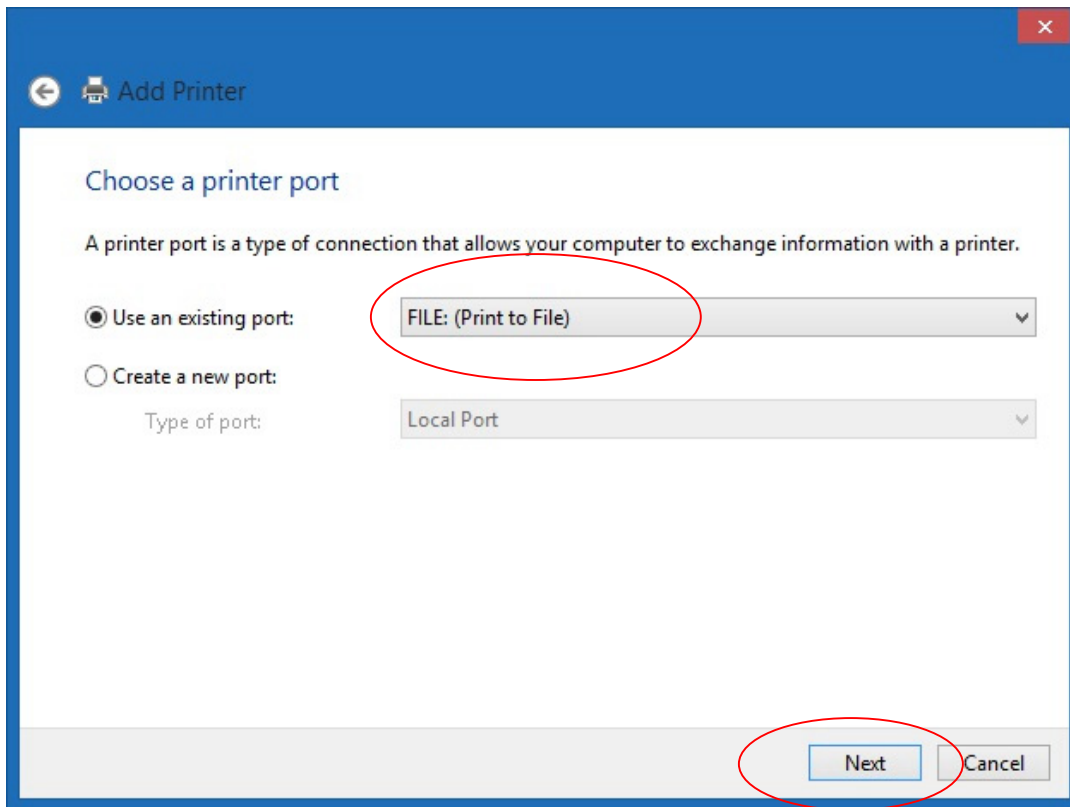
6. Depending on your OS, you will get one of the following windows...
  - c. **Windows 8**, Select 'Add local printer or network printer with manual settings' then 'Next'.



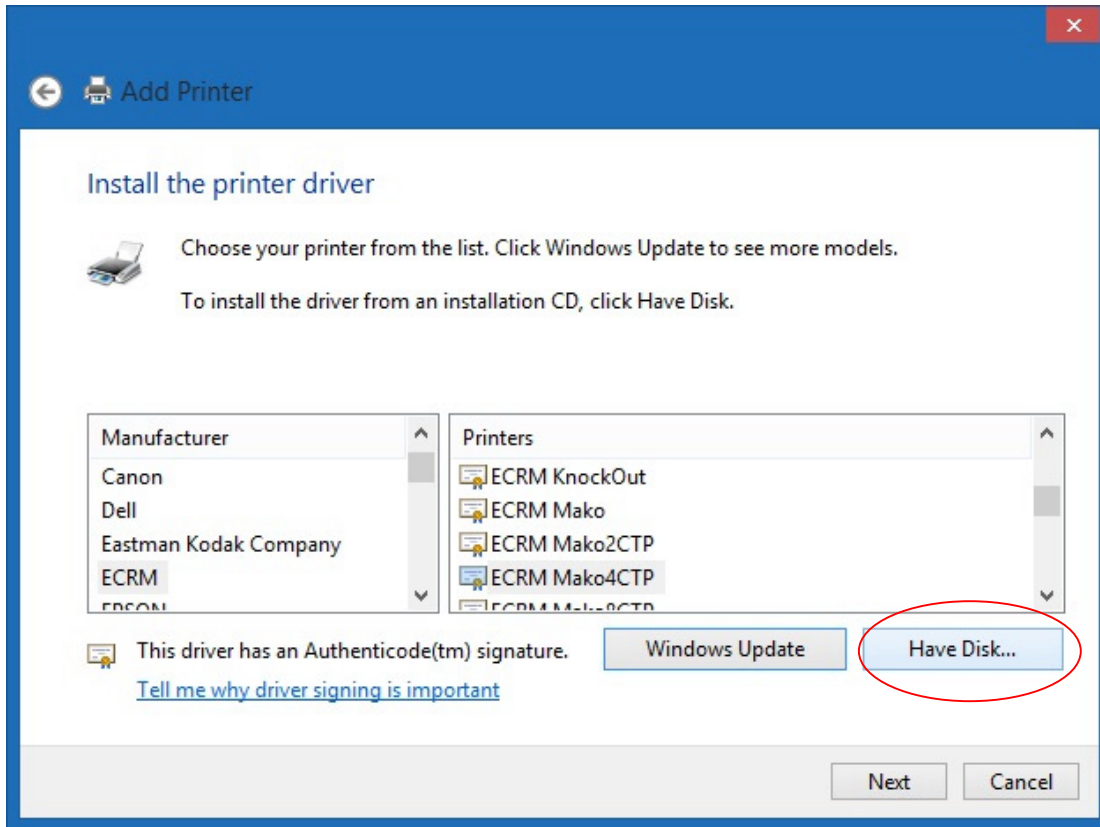
d. **Windows 7**, Select 'Add local printer', then 'Next'.



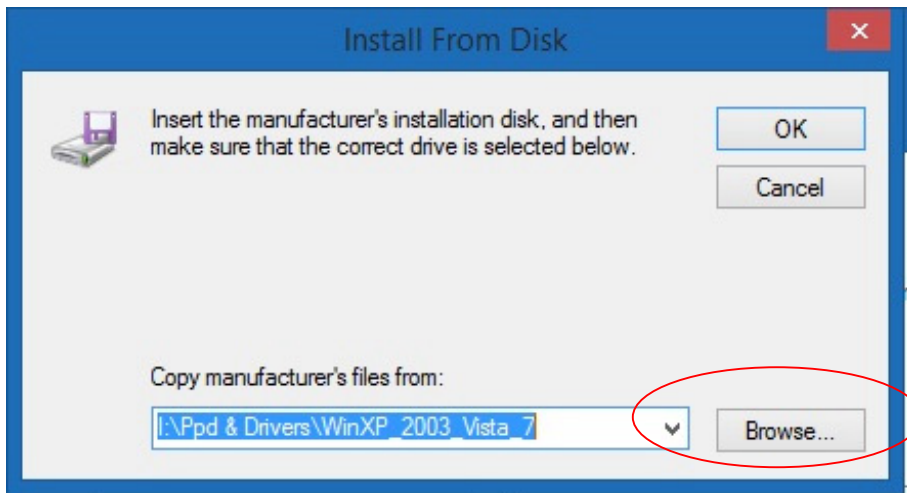
7. Select 'FILE: (Print to File)', then 'Next'



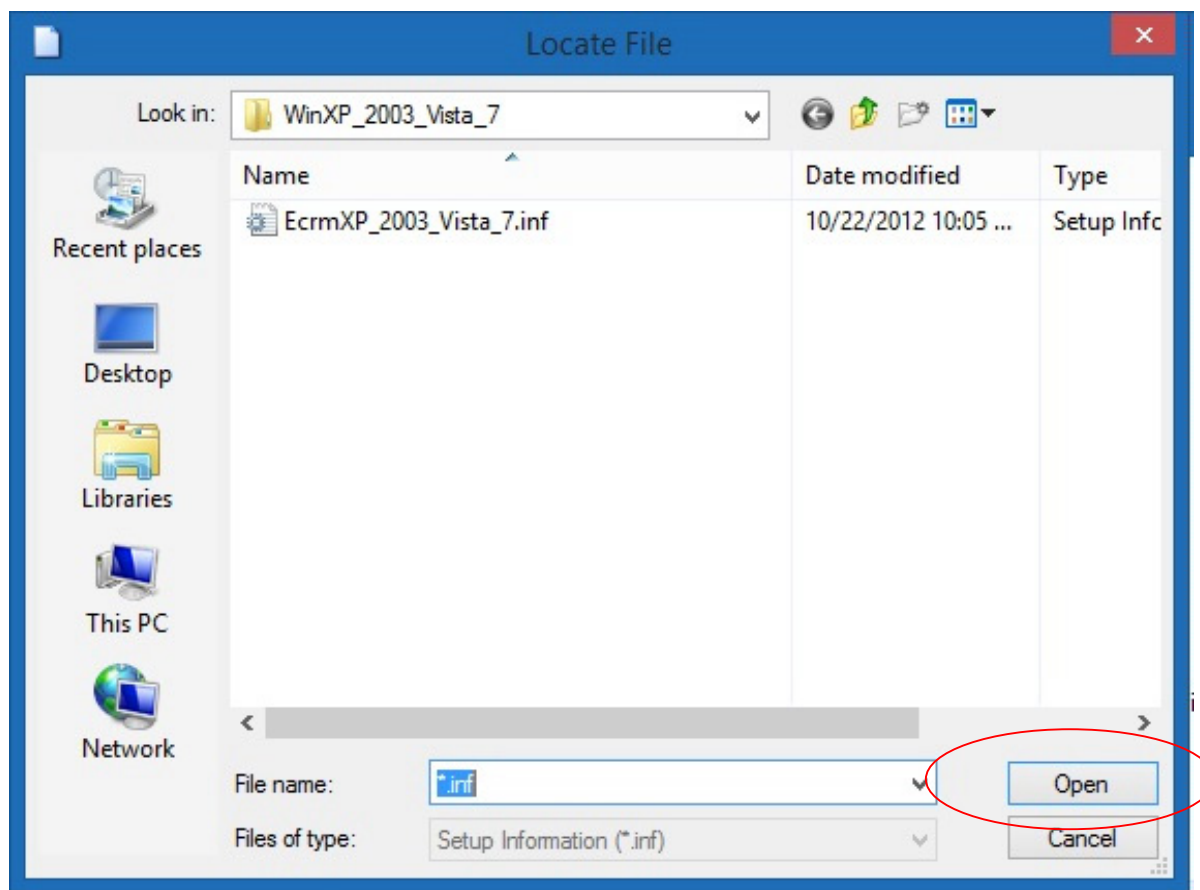
8. Insert your WorkMates/RIPMate DVD and Select 'Have Disk...'



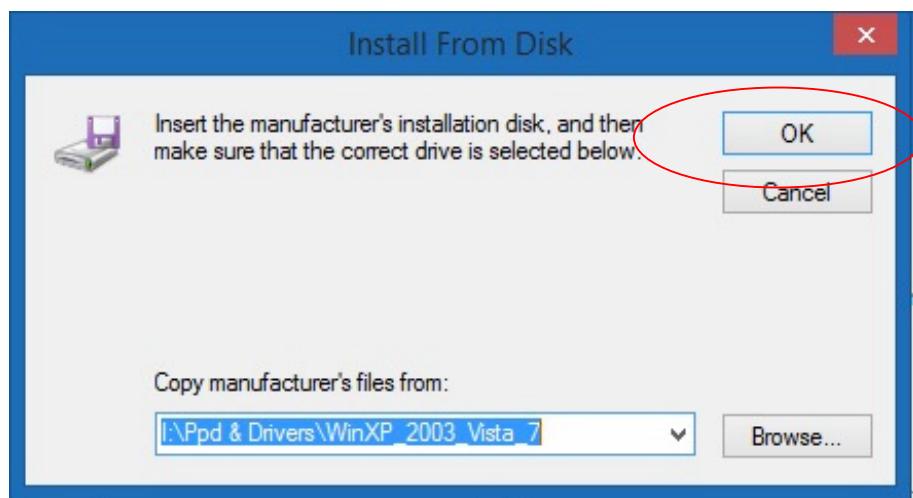
9. Select 'Browse...', and Browse to 'PPD & Drivers/WinXP\_2003\_Vista' folder on the DVD.



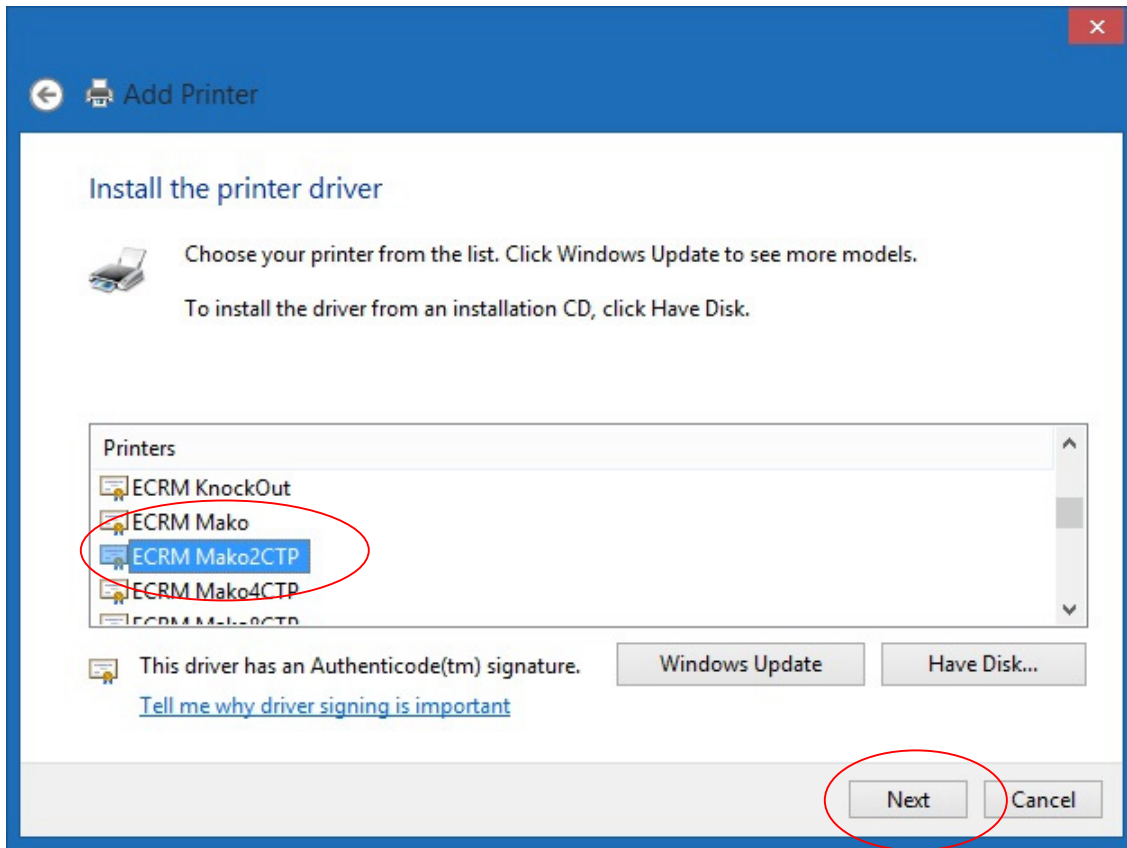
10. Then, select 'Open'.



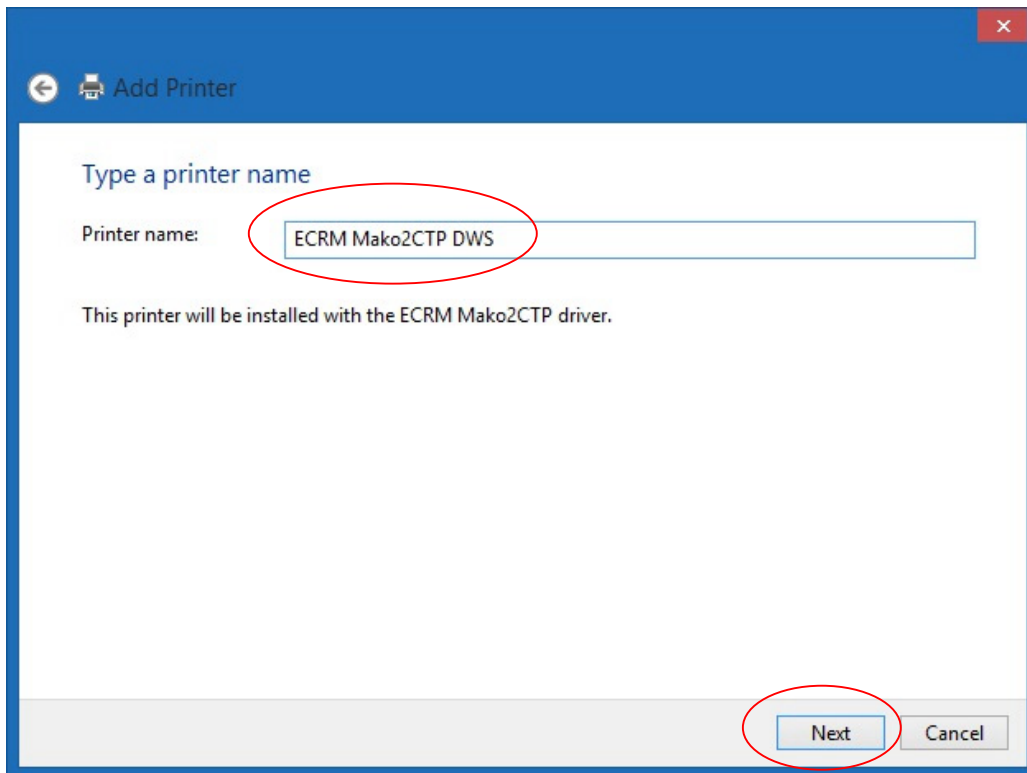
Then select 'OK'.



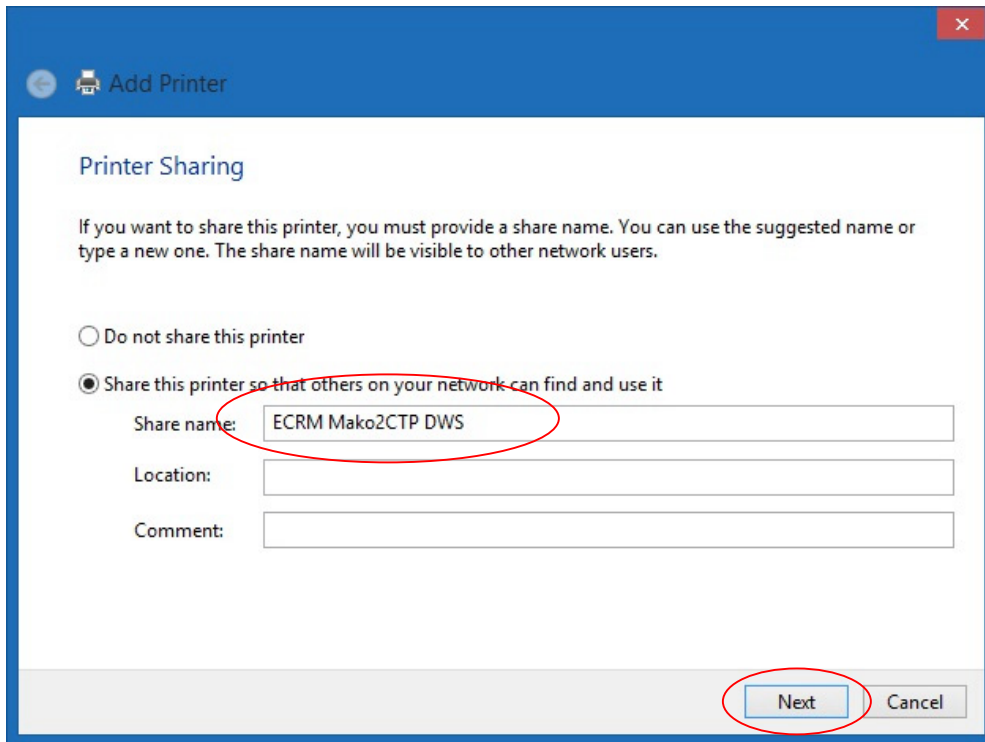
11. Select the Recorder/Printer from the list, then select 'Next'.



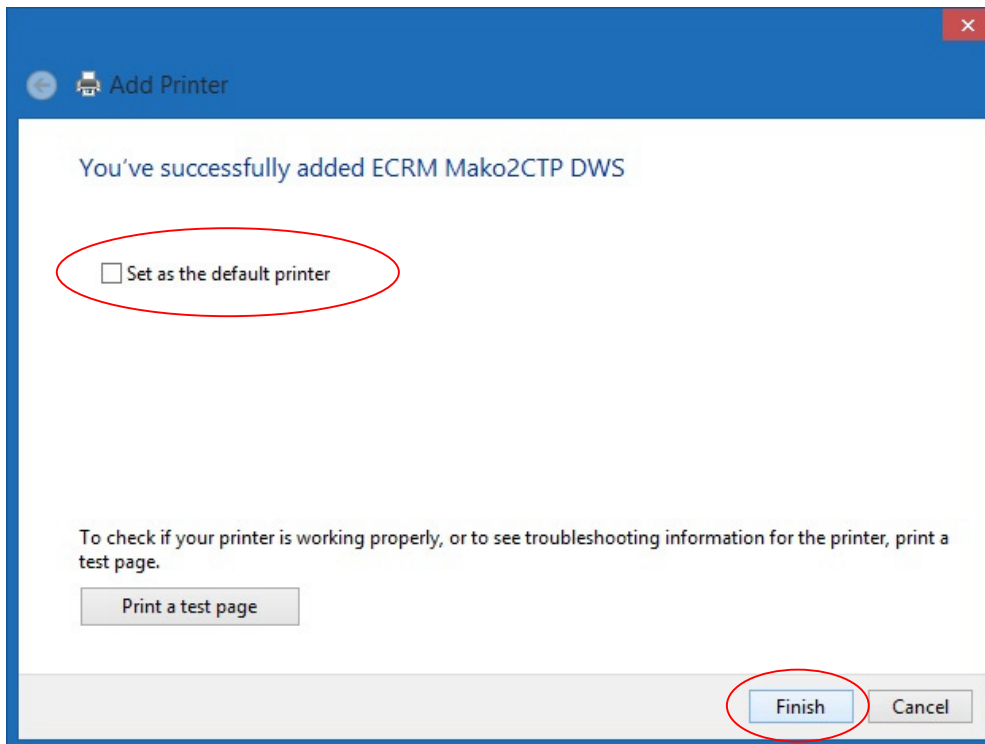
12. Enter a Printer Name, then select 'Next'.



13. If desired, share the printer and select 'Next'.



14. If desired, set the new printer as the default printer, then select 'Finish'.



15. From your application, print to the new printer, saving the file to the local desktop shortcut created in step 2.

## **Installing PPD for your PrePress Applications**

Some applications require you 'load' the PPD in addition to installin the printer (as described above). Consult your prepress application documentation for the steps to do this.

The PPDs can be found on the WorkMates/RIP DVD in the 'PPD & Drivers/WinXP\_2003\_Vista' folder.