

Print. Profit. Preserve.

Mitsubishi Clear Inkjet Film and RIP Platform

Cost-effective inkjet alternative to analog film



Clear inkjet film imaging system for screen and flexo printing

Eliminate traditional film imaging and processing systems with efficient and cost-effective Mitsubishi inkjet film and SDP-IJ2F RIP Platform. This turnkey imaging system enables you to use your existing inkjet printer to produce films that are ideal for screen printing, engraving, crash and rubber stamp printing, envelope printing and other applications that require film.

Save time and money

Mitsubishi's simple plug-and-play implementation allows you to eliminate all costs associated with imagesetter maintenance and processing chemistry, including purchase, handling, disposal and compliance costs. You won't need a darkroom anymore, either, reducing your imaging system footprint.

Outstanding performance

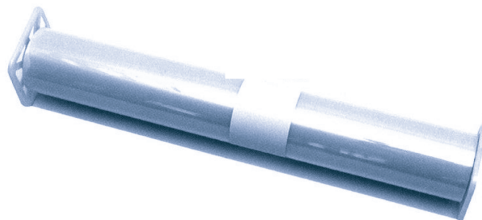
Mitsubishi's clear inkjet film has a specialty coating that dries instantly, so films can be used immediately and are water-resistant. Dimensional stability is outstanding, with no curling.

When imaged with Mitsubishi's SDP-IJ2F RIP, our clear inkjet material delivers excellent results on press, with outstanding registration accuracy, solid blacks and sharp dot and line reproduction. It is ideal for press conditions up to 133 lpi.

System components

Mitsubishi Clear Inkjet Film:

a clear film with a microporous coating that ensures consistent density levels on every printed film. The polyester base layer delivers a high level of dimensional stability, enabling accurate registration from film to film.



Mitsubishi SDP-IJ2F RIP Platform:

SDP-IJ2F RIP software offers compelling features and benefits:

- Adjusts dot-size and ink-limit settings
- Supports ABS screening
- PS Level 3, supports PS, EPS, PDF and TIFF
- Incorporates Flexible Queue System
- Multiple inputs and outputs
- Supports spot colors, ICC profiles and color management
- Easy linearization makes it simple to keep the system in control



 **Mitsubishi Imaging (MPM), Inc.**

www.mitsubishiimaging.com

Technical information

System Components

Film	Mitsubishi Clear Inkjet Film
Computer Platform	Mitsubishi SDP-IJ2F RIP software, Windows OS
Printer	Sold separately

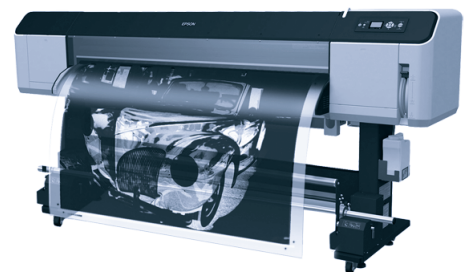
Clear Inkjet Film	UC100	UC100M	UC175M
Description	Transparent clear film; instant drying and easy to handle	Matte grain surface for good vacuum and increased ink absorption	Thicker base material for added dimensional stability; unique matte grain surface provides good vacuum and increased ink absorption
Applications	Overlays, color separations, screen printing	Flexographic applications	Flexographic applications
Polyester base	5.5 mil	5.3 mil	8.4 mil
Coating	Microporous coating technology	Microporous coating technology	Microporous coating technology
Surface	Transparent	Matte	Premium matte
Basis weight	175 gsm	175 gsm	280 gsm
Width x 100' rolls	17", 24", 36", 42", 44", 50", 60"	17", 24", 36", 42", 44", 54", 60"	17", 24", 36", 42", 44", 60"

Printer Compatibility

As printer technology becomes more sophisticated, so do the choices. The Mitsubishi SDP-IJ2F RIP supports a wide range of EPSON Stylus Pro and Stylus Photo Inkjet Printers, from older systems to the latest vDot4 series.

EPSON 4000 Series	Epson 4800, 4800 and 4900
EPSON 7000 Series	Epson 7700, 7800, 7880, 7890 and 7900
EPSON 9000 Series	Epson 9600, 9700, 9800, 9880, 9890 and 9900
EPSON 11000 Series	Epson 11000

If the printer you own is not on this list, contact Mitsubishi Imaging for the latest compatibility information.



555 Theodore Fremd Ave.
Rye, NY 10580-1451
800-765-9384
mitsubishiimaging.com