

## **Preparing the SDP-Eco1630 Series of Platesetters for the New SDP-FRS175 Plate Material**

Mitsubishi Imaging is releasing a new 8 mil matte backed plate material, SDP-FRS175 (FRS). In order to get the best performance from your Eco1630 and the new FRS175 plate material, we suggest that you use the new Type II Eco Chemistry (ECOACII and ECOSTII) and that you inspect your Eco1630 platesetter and call your certified Mitsubishi Imaging dealer to service your Eco1630 to ensure it is in proper working condition. By having this maintenance performed you will optimize the performance of your Eco1630 and you will get the best performance from the new plate material. Both the Processor and Optical systems should be checked, cleaned and adjusted as needed.

This document outlines the checks and adjustments that will ensure the optimal performance from both the Eco1630 and the new FRS plate material.

### **Processor Maintenance**

#### **Wire roller**

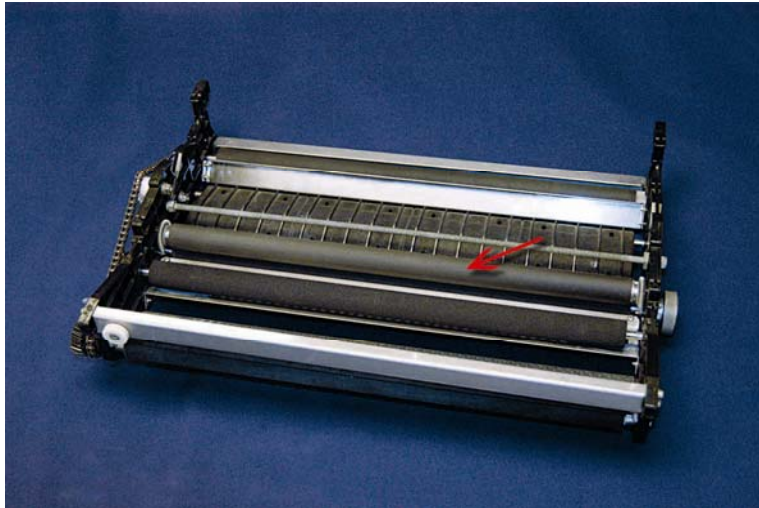
The Wire roller (56C594446-01 Coating Roller), should be inspected for oxidation and wear and replaced if needed. This roller is an important component for the proper processing of the plate material.



*Example of coating roller with oxidation that should be replaced.*

## Rollers

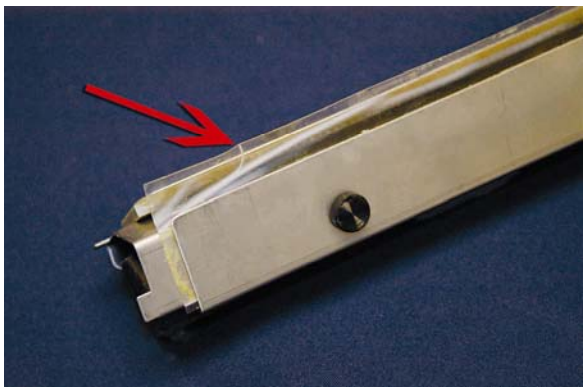
Rollers in the processor should be inspected looking for cleanliness and swollen ends, and replaced as needed. Pay special attention to the center pair of rollers between the activator and stabilizer rollers (6C494288 lower, 70406175 upper). They should be a dull black color. If they have any other coloring to them, they should be cleaned with alcohol. Rollers should also be checked for swelling and cracking. A ¼ inch wide piece of plate material can be used as a feeler gauge to check for swelling.



*Inspect these rollers.*

## Diffusion sheets

The Diffusion sheets (56C594391 Activator, 56C594392 Stabilizer) for both the Activator and Stabilizer should be inspected for wrinkles and nicks, and replaced if found.



*AC Diffusion Sheet that is wrinkled and should be replaced.*

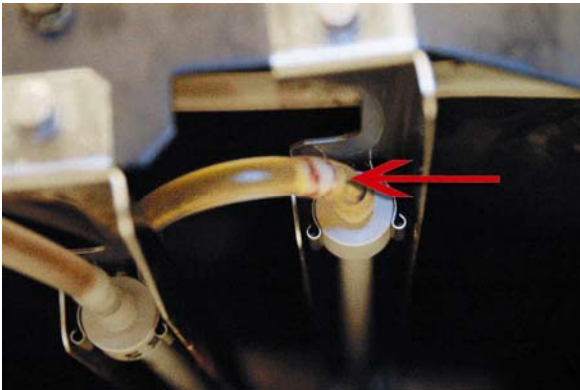


*ST Diffusion Sheet. Be sure to inspect both AC and ST diffusion sheets*

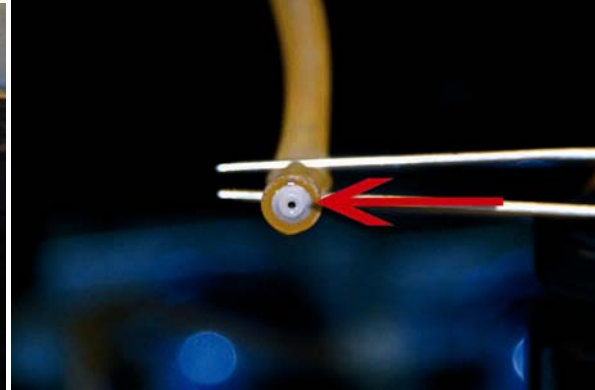
## Chemistry circulation

### Restrictors

The restrictors (3-6C594279 Orifice) in the hose just before the tubes that drop the chemistry onto the processor should be cleaned with a paper clip or replaced.



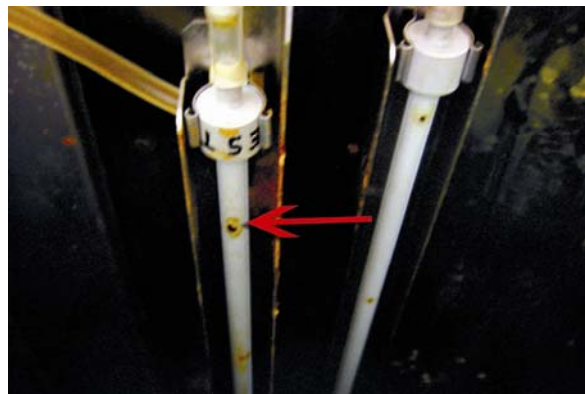
*Chemistry Restrictor*



*Clean here.*

### Spray Tubes

The Spray Tubes (56C594281 AC and ST, 56C594557 Water) that drop the chemistry onto the supply guide should be removed and cleaned, making sure that the small holes are cleaned and flowing freely. A paper clip is a good tool to use in cleaning holes.

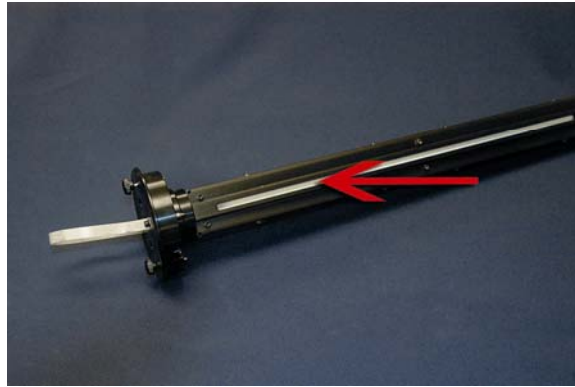


*Clean these small holes.*

## Optics

### Cylindrical lens

The Cylindrical lens should be removed and checked for cleanliness. Any dust or debris should be cleaned from the machine at this time.



*Clean along this area (both sides).*

### Check Exposure

Exposure should be confirmed after installing the new material using the MPM.PS test chart. This file with instructions can be found on our web-site at [www.mitsubishiimaging.com/support](http://www.mitsubishiimaging.com/support), Click on "Training" choose "SDP Polyester Plates" and then choose "Exposure".

Please contact your certified Mitsubishi Imaging dealer if you have any questions on this bulletin or Mitsubishi Imaging directly at 914-925-3261.